

UNIMEC PRODUCTS



Trapezoidal
Screw Jacks



Stainless Steel
Trapezoidal Screw Jacks



Technopolymer
Trapezoidal Screw Jacks



Ball
Screw Jacks



Bevel
Gearboxes



Bevel Gearboxes
Atex Series



Stainless Steel
Bevel Gearboxes



Mechanical Speed
Modulators



Couplings and
Transmission Shafts



Proprietary
Lubricants

BEVEL GEARBOXES ATEX EDITION



AVAILABLE TOOLS

FREE DRAWINGS
DOWNLOAD

FREE SERIAL
NUMBER ARCHIVE

FREE
CONFIGURATOR

PRODUCT
SIZING

Unimec S.p.A.
Via del Lavoro, 20
20865 Usmate-Velate (MB) - IT
tel. +39.039.6076900
fax +39.039.6076909
info@unimec.eu

Unimec Citius S.r.l.
Via della Tecnica, 10
35035 Mestrino (PD) - IT
tel. +39.049.9004977
fax +39.049.9004524
unimeccitius@unimec.eu

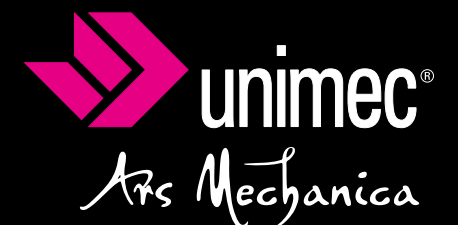
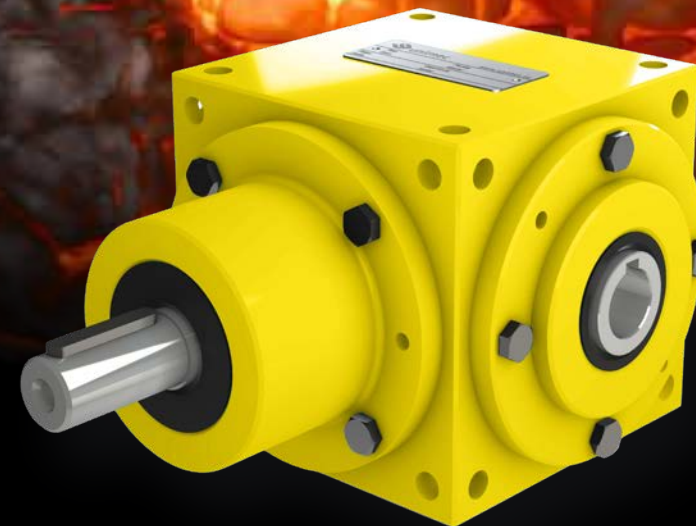
Unimec Hispania S.L.
P.I. El Prat C/Ronda de les Conques, 27
08180 Moià (Barcelona) - ES
tel. +34.93.1147067
fax +34.93.1147068
info@unimec.es

Unimec France S.a.r.l.
29, Rue des Cayennes - Z. A. Boutries
BP 215 - 78702 Conflans Cedex - FR
tel. +33.1.39196099
fax +33.1.39193594
info@unimec.fr

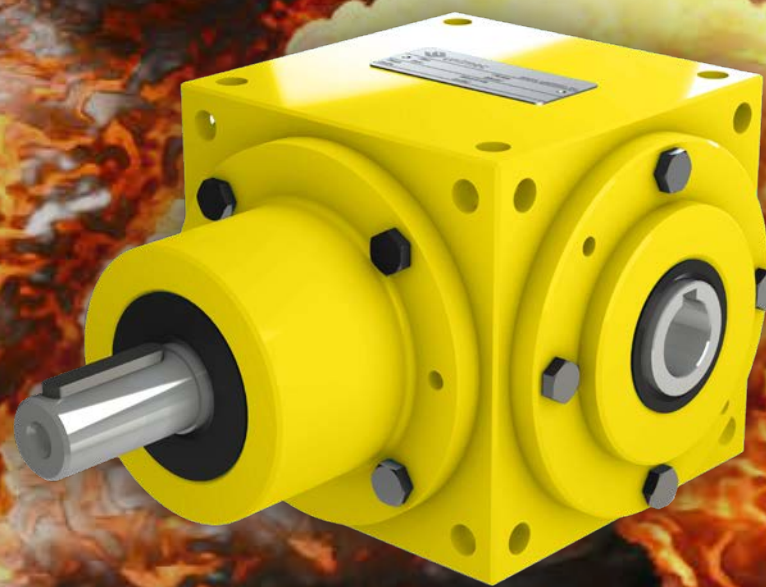
Unimec North America Inc.
11 Millpond Drive, Bldg. 2
07871 Lafayette, NJ 07848 - USA
Tel. +1.973.362.1427
fax +1.973.362.1497
info@unimecusa.com



in Instagram Facebook YouTube www.unimec.eu



BEVEL GEARBOXES ATEX EDITION



ALSO AVAILABLE IN
STAINLESS STEEL

ALL SIZES!
ALL MODELS!
ALL FORMS!

ENDURANCE TEST BENCH

The ATEX Series was designed with the aid of a custom-made 80 kW gearbox test bench specifically developed for Unimec's R&D Department



The Unimec "ATEX Series" is an ATEX Directive-compliant line of products intended for use in potentially explosive atmospheres

REGULATIONS

2014/34/EU	ATEX Directive
2006/42/EC	Machinery directive

APPLICATION RATINGS

Category	2GD
Gas group	II G
Dust group	III C
Type of protection	ϵ_x "h"

CONSTRUCTIVE FEATURES

Viton seals
PT100 temperature probe (Atex marked)

NORMS

EN 1127-1:2019
EN ISO 80079-36:2016
EN ISO 80079-37:2016

Temperature class	T5
Max surface temperature	100 °C
Ambient temperature	-20/+55 °C
IP classification	65

Oil level indicator (Atex compliant)*
Magnetic fill&drain plugs*

* Gearbox installation orientation must always be indicated for correct plug positioning

ALL DIMENSIONS AND FEATURES ARE STANDARD AS PER OFFICIAL CATALOGS EXCEPT THE FOLLOWING POWER TABLES

POWER TABLES

